



SEB NET-PATH_m



SEB NET-PATH_m

Maximum Value at Minimum Cost

SEB NET-PATH_m, the latest addition to the long line of Site Event Buffers from Teltronics, offers maximum value at a “mini” price for telecommunications service companies or self-maintained end users of data or telecom equipment. The NET-PATH_m is designed for the smaller PABX or branch office system like Nortel’s BCM and/or SRG .323 Gateway products, while providing the same powerful monitoring features as its larger counterparts, but at a significantly reduced price.

Packaged in a small desktop chassis, the NET-PATH_m provides two (2) serial ports, a 10/100 base-T connection and four (4) contact sensors insuring the ability to monitor virtually any data or telecom system. The NET-PATH_m comes standard with 16 Mb of non-volatile Flash and 64 Mb of SDRAM, to address even the most demanding data storage requirement.

The NET-PATH_m is fully compatible with the Teltronics IRISnGEN Alarm Management System and supports all of the features of the SEBea family including:

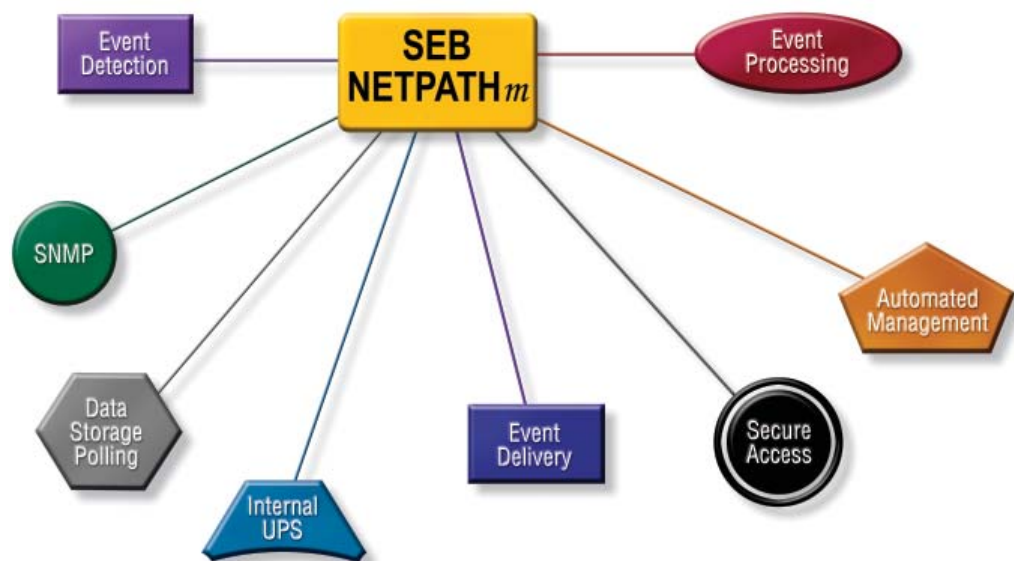
- Alarm event detection and reporting
- Data collection and polling
- Advanced correlation of multiple alarms
- Custom host dialog and proactive scripted fault correction
- Secure access for remote devices
- SNMP Proxy Agent for legacy devices
- SNMP Segment Management for SNMP-compliant systems (available option)

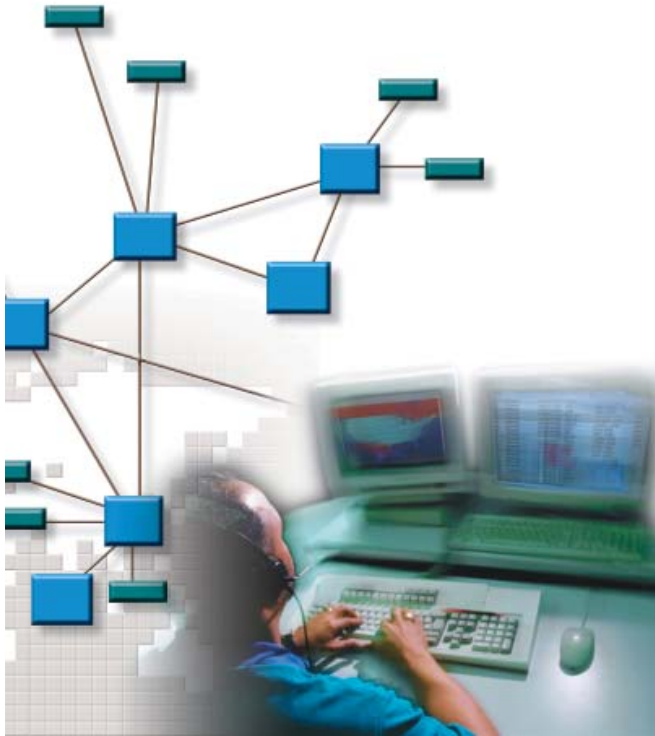
Flexible and Reliable

SEB NET-PATH_m is designed to be host-independent, which means it can be used to monitor and report alarms for most any electronic device, whether it is equipped with an RS232C interface, alarm contacts or a network connection. Using a unique architecture specifically designed for unattended operation, and built-in battery backup, the NET-PATH_m provides the highest possible reliability for monitoring mission critical devices. Even when facility power is lost, the NET-PATH_m continues normal operation, storing important data and reporting critical events – such as power outages!

Event Detection

Tremendous flexibility in data screening allows the SEB NET-PATH_m to detect and react to specific host conditions or data streams with customized responses. Changing host conditions can trigger reactions which may vary from simple data storage and reporting to a fully scripted dialog between the NET-PATH_m and the host device for proactive error correction of the fault condition. The NET-PATH_m is able to detect both physical and logical events associated with virtually any host system. Logical events are derived from data streams received from the monitored host, either from an RS232 or network interface, while physical events are derived from contact sensors of the NET-PATH_m.





Event Reporting

Regardless of the source of the data, events are screened in the SEB NET-PATH m by extensive criteria including, but not limited to, date and/or time of day, period of time in a given state or number of occurrences of the event. The NET-PATH m is able to deliver a reportable event message to multiple destinations using any combination of the following methods:

- Dial-out connection using an internal or external modem
- Network connection to an SNMP network management system using a public or private network
- Visual display on a locally connected system (e.g., VDU, printer)
- Internal or external FAX modem
- Audible

Events may be delivered to a single destination or a combination of destinations defined for each event, or multiple events may point to the same destination(s). The order of delivery may be specified as well as the logic to allow alternate destinations to be specified if an event cannot be delivered to a primary destination.

Connectivity

SEB NET-PATH m offers flexible configurations of ports and contact sensors to accommodate a wide variety of application requirements. Ports are universal in nature and may be configured to operate with the applicable host device using serial or network protocols. RS232C speeds up to 115kb, modem speeds up to 56kb and network connectivity at 100 megabits is standard.

Access Security

SEB NET-PATH m offers safe, fast and effective methods to access your monitored devices for configuration or problem resolution in a secure manner. Access is fully configurable by port and the level of access privilege may be defined for each user. A multiple level sign-on process is utilized that supports:

- User name
- Password
- Callback
- Callback using random passwords delivered to pagers

Optionally, the SEB NET-PATH m supports token based two (2) factor strong authentication that provides security mechanisms for both man-to-machine access (i.e., engineer calls the NET-PATH m) and machine-to-machine access (i.e., IRISnGEN calls the NET-PATH m). This insures the highest practical level of secure access possible. Once access is gained to the NET-PATH m , the functions that are available are controlled by the NET-PATH m and linked to the user ID.

Data Storage and Collection

The most basic function of the SEB NET-PATH m is to reliably collect and store data from most any host device. Up to 64MB of data from multiple host types may be stored in RAM. Data polling is just as flexible and can use modem or network connections to selectively extract the data using a variety of protocols. Ports on the NET-PATH m may be configured to function in the manner required by the application.

SEB NET-PATH^m

Hardware Features

| Feature | Description | Standard Configuration |
|-----------------------|---|--|
| Communication Ports | RS232, RJ-45, DTE | 2 standard RS232 ports |
| Protocols | Supported communications protocols | IRISnGEN/SEBea proprietary, TCP/IP, FTP, PPP, Telnet, SNMP, ICMP |
| Network | 10/100Base-T | 1 10/100baseT Ethernet |
| Contact Sensors | Hard contact sensors | 4 contacts - RJ45 connector |
| Modem | Up to 56kbs, class 2 fax | 1 modem (integrated) |
| Memory | Available memory for Program and data storage | 16 Mb Flash (non-volatile) 64 MB SDRam |
| RTC | Real Time Clock | Yes |
| System Power | Main system power source | 110/220 VAC, 50/60 Hz or 48 VDC option |
| Battery Backup | Maintains full functionality for up to 2 hours | Field replaceable batteries |
| Sleep Battery | Provides long term backup for system parameters | Lithium |
| Indicators & Switches | LED indicators for display of System and diagnostic information | LED for battery, power, general health, and alarm condition. Reset switch. |
| Watchdog | Watchdog timer | Yes |
| Mounting | Desktop | |
| Operating Environment | Temperature: Operating 50-110° (F) Non-operating 20-140° (F) Relative humidity, non-condensing 20-80% | |

Ideas that
Communicate



2150 Whitfield Industrial Way
Sarasota, Florida 34243
+1 (941) 753-5000
www.teltronics.com

Europe: +44 (0) 1582 814722

Mexico: +52 (55) 5572-1700

Specifications subject to change without notice.

© 2004 Teltronics Incorporated. SEB NET-PATH^m is a trademark of Teltronics, Inc.